



RUTGERS-NEW BRUNSWICK  
Rutgers Center for  
Adult Autism Services  
Graduate School of Applied and  
Professional Psychology

# Welcome to the College Support Program



# Contents

**CSP Overview**

**Our Staff**

**CSP New Student Orientation**

**Directions to RCAAS**

**CSP Services**

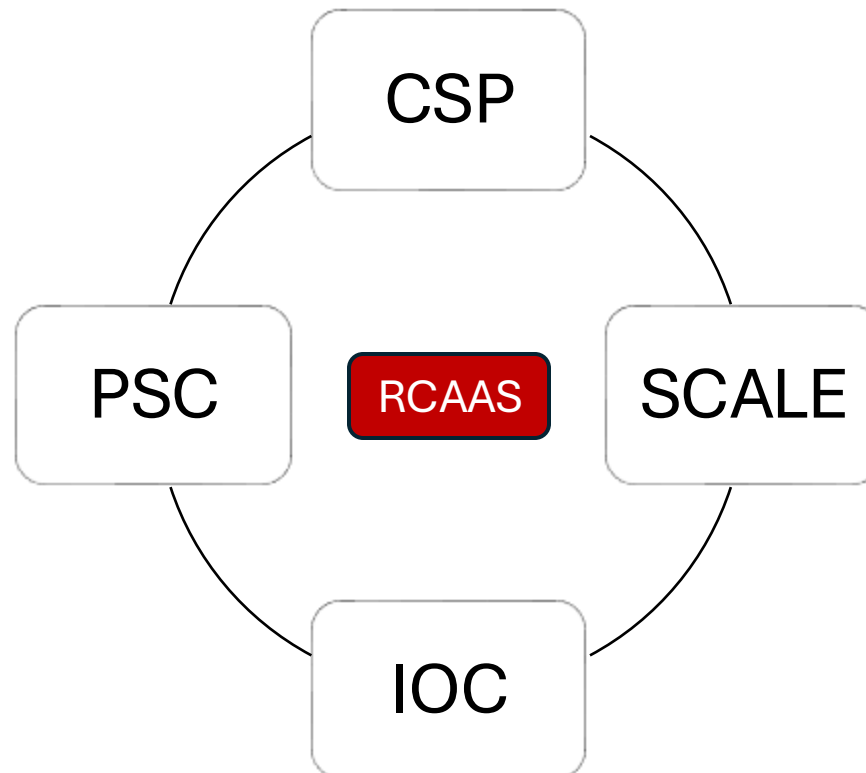
**Open Door Policy**

**Welcome Week**



# College Support Program (CSP)

- 1 of the 4 units **Rutgers Center for Adult Autism Services (RCAAS)**
- **100 Dudley Road, New Brunswick, NJ 08901 (Cook/Douglass Campus)**



# Our Staff



**Ian Bober, BCBA**  
Senior Program Coordinator  
ian.bober@rutgers.edu



**Erin Walker, MSW, LSW**  
Senior Program Coordinator  
erin.walker@rutgers.edu



**Keya Pai**  
Assistant Program Coordinator  
kup6@rcaas.rutgers.edu



**Dianna Rampino**  
Intern Coordinator, Graduate  
Student Coordinator



**Daniel Juengst**  
Graduate Student  
Coordinator



**Debra Perlmutter**  
Graduate Student  
Coordinator



**Samantha Dasilva**  
Graduate Student  
Coordinator



**Lester Lee**  
Graduate Student  
Coordinator





# CSP New Student Orientation, 08/29

At the RCAAS, from 10:00am to 2:00pm

- **10:00am to 12:00pm** Important information about CSP
- **12:00 to ~2:00pm** Campus Tour by CSP Peer Mentors

Bring laptop/other device and something to write with!

*Separate* from ***Rutgers New Student Orientation!***





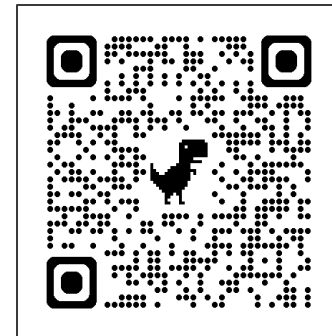
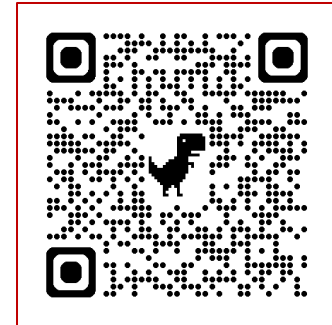
# Directions to RCAAS

If you have a **student parking permit**, make sure you park at your **assigned parking lot(s)** according to your permit

- Take the Rutgers bus to the Red Oak Lane bus stop. Routes vary across campuses. See [Bus Route Descriptions & Schedules](#) for more
- Enter the RCAAS address into Google Maps: **100 Dudley Road, New Brunswick, NJ 08901**

If you **don't** have a student permit, but need to park on campus

- Purchase a one-day visitor pass. See [Visitor Permission](#) for more



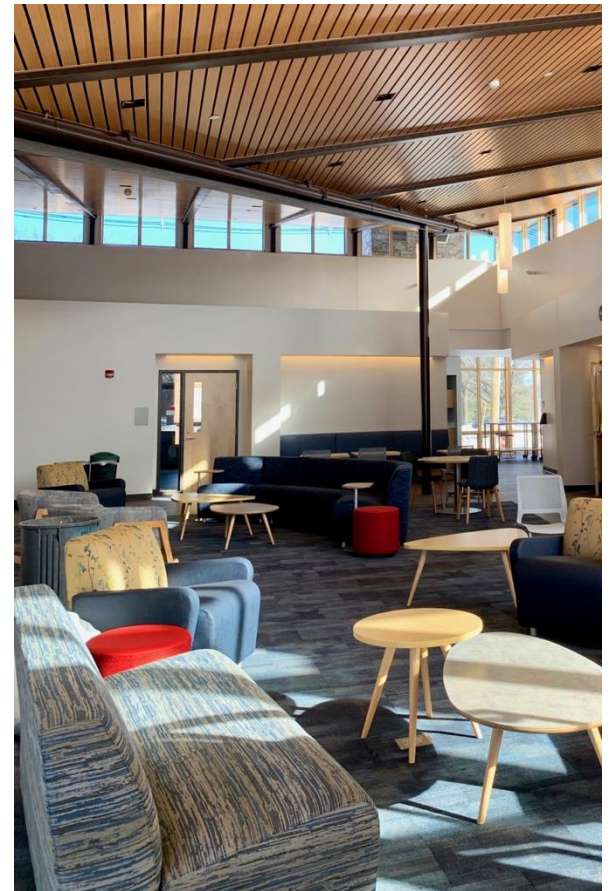
# CSP Services

WHAT WE OFFER	TIER 1 CSP ACCESS	TIER 2 CSP ACCESS+
Weekly Individual Coaching Sessions	✓ 30 min	✓ 60 min
Weekly Skills and Strategy Group	✓ 90 min	✓ 90 min
Mental Health Monitoring	✗	✓
Individual Academic Support	✗	✓
Campus Liaison Service	✗	✓
Weekly Peer Mentorship	✗	✓
Monthly Social Events	✓	✓



# Coordinator Availability

- We do our best to be available if you have any questions or need help
- We would rather you reach out to us than struggle on your own



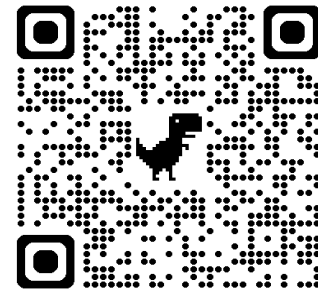


# 2024 Welcome Week, 08/28 - 09/7

- Activities designed for first-year and transfer students at Rutgers
- To enhance connections and community, navigate campus, and participate in traditional events to prepare for the upcoming semester
- <https://transition.rutgers.edu/students/welcome-week>

**STEP #1: Download the Rutgers–New Brunswick app via the [Apple](#) or [Google Play Store](#)**

**STEP #2: Search and Download the “[2024 Welcome Week](#)” guide**



# Thank you!

We're so excited to have you onboard at the CSP!

